

Exhibitions 2008

The main exhibitions at Patchings are to be found in the Barn and Crew Yard Galleries. The exhibition programme for this year is listed below in date order.

There are occasional exhibitions in the Pavilion, details of which are included, however to keep up to date

with all exhibitions and events please visit the Patchings website.

Current work by Liz and Chas Wood can be seen in the Barn Restaurant along with a selection of work by some of our favourite artists.

This is a special year for Patchings as we

celebrate our 20th anniversary. Look out for exhibitions and events arranged in celebration of this milestone, in particular our Summer Outdoor Concert with Michael Ball in a Musical Spectacular with Special Guests – don't miss it.

We hope you enjoy your visit to Patchings



HERALDS OF SPRING

LORRAINE HOGG, ANNE SYMONDS

FEBRUARY 9 – MARCH 9

CREW YARD GALLERY

New to the gallery Lorraine heralds the translucent rainbow of light with this selection of panels and sculpture. Cast off winter blues and enjoy an early spring with this seasons new jewellery and accessories from the innovative designer Anne Symonds.

CHASING THE LIGHT – LANDSCAPES OF SOUTHWELL

DECLAN JOYCE

MARCH 15 – APRIL 20

BARN GALLERY

'This exhibition is my celebration of Southwell and its surrounding countryside, an area which has inspired me by its atmospheric and elegant rural charm. Observing the shifting patterns of nature is my passion. From sunrise to sunset I see the light travel across the land, revealing its changing aspects. Each season brings its own individual beauty and it is this that I want to share with you. I hope you enjoy viewing these images as much as I have enjoyed photographing them.' Declan Joyce



TEMPUS FUGIT – AMANDA ZOE, MANDY NASH, TIM FOWLER

MARCH 15 – APRIL 27

CREW YARD GALLERY

Engraved and heat treated metals, painted and fused glass, aluminium, copper, silver, resin and all form carriers for this array of artists wall, mantel and pendulum clocks.



ALL FIRED UP – NICHOLAS MARSH

MAY 3 – MAY 25

CREW YARD GALLERY

It is indeed a treat and a pleasure to exhibit this work. The combination of organic shell like shapes, the fine throwing and the wonderful range of sea-beach grey, blue and white colours on the polished surface is just superb!



WONDERFUL WORLD – POLLYANNA PICKERING

APRIL 26 – MAY 28

BARN GALLERY

Since her last exhibition at Patchings, Pollyanna has painted wolves in Transylvania, Amur tigers in Siberia and completed a fellowship expedition on behalf of the Canada based Artists for Conservation Foundation to paint Himalayan wildlife in Bhutan. Work on show will include paintings of our own British wildlife alongside endangered species from around the world and what a wonderful world! BBC 1 April 23 'Made in England' – part of a documentary series with a focus on British artists featuring Pollyanna. Work from the BBC series will be included in the exhibition.



THE ARTIST AND LEISURE PAINTER

PATCHINGS 2008

COMPETITION & EXHIBITION

JUNE 5 – JULY 13

BARN AND CREW YARD GALLERIES

Organised in conjunction with The Artist and Leisure Painter magazines, the open competition has become a major opportunity internationally for both amateur and professional artists.

The exhibition promises high quality with 70 works from each category exhibited in both galleries and a further 50 highly-commended from each category on the Patchings website. Entry details available from Patchings; closing date 28th March 2008.



SALTY DOGS, BIRDS & BOATS – SUE EVANS

JUNE 5 – JULY 27

CREW YARD GALLERY

Landlocked Nottingham receives a nautical reprieve from Sue Evans whose sculptures and automata are skilfully created from driftwood and found objects. Her work is supported by others whose themes evoke sun, sand and sea.



A CELEBRATION – 200 YEARS OF BRITISH PAINTING

JULY 26 – AUGUST 31

BARN GALLERY

One of our 20th anniversary exhibitions celebrates British painting over the last 200 years. A number of pieces on loan from the Government Art Collection (GAC) form the centrepiece of this exhibition. The GAC is a unique British cultural resource that plays a significant role in promoting British art, culture and history by placing works of art on display in a variety of Government buildings across the UK including 10 Downing Street, Whitehall and Regional Government Offices as well as several hundred British Embassies and Residences abroad. Since 1898 the GAC has acquired art mainly by British artists dating from 16th century to the present day. The exhibition includes a selection of work on loan from Newark and Sherwood Museum Services and paintings from well known contemporary artists along with examples of materials and pigments supplied by Winsor and Newton charting the progress of paint manufacture spanning the last two centuries.



© Crown copyright: UK Government Art Collection

supported by



DAZZLE – STITCH & SILVER

AUGUST 2 – SEPTEMBER 6

CREW YARD GALLERY

Laura Bradshaw-Heap creates the most wonderful micro zones of intrigue encapsulated in silver and glass. This collection shows the skill of jewellers who work in a variety of styles and materials creating a special treasure that may become your family heirloom.

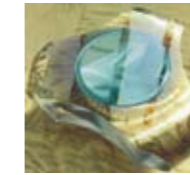
PATCHINGS 20TH ANNIVERSARY EXHIBITION

SEPTEMBER 6 – OCTOBER 19

BARN GALLERY

Over the years we have been privileged to show work by many of the country's leading artists.

This exhibition is a celebration of their work and 20 years of Patchings. Be prepared to marvel and enjoy. Contributions from Shirley Trevena, David Curtis, David Bellamy, Mike Chaplin, Hazel Soan, Ann Blockley, Jenny Wheatley, Peter Welton ... to name but a few.



IRONY – MILES WHETTON, SEAN

SEPTEMBER 13 – OCTOBER 26

CREW YARD GALLERY

Your chance to acquire an individually wrought iron artwork. Not only will these be the more familiar mirrors but also especially commissioned consoles, candelabra and coffee tables.

THE LINCOLNSHIRE ARTISTS' SOCIETY

OCTOBER 25 – NOVEMBER 23

BARN GALLERY

The Society was founded in 1906 as the Lincoln Drawing Club. During the past 102 years the Society has sought to bring the work of its members to the fore and to attain and maintain a high standard in its exhibitions. Today its members' work exhibits a wide range of media, techniques and styles.



THE ART OF CHRISTMAS

BEE SANDERSON, PETE MOSS,

ANNE POVEY

NOVEMBER 1 – DECEMBER 24

CREW YARD GALLERY

The cream of the crop at Christmas, the much sought after jewellery by Bee Sanderson stands sculpturally alongside the harmonious ceramic forms of Pete Moss. The creative drive inspired by nature that Anne applies to her glass results in strong fluid and sensual pieces.

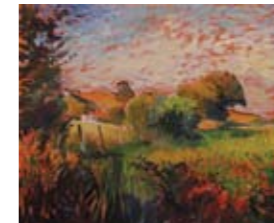


PATCHINGS GROUP EXHIBITION

DECEMBER 6 – FEBRUARY 1 2009

BARN GALLERY

As part of the 20th anniversary celebrations this popular annual exhibition this year includes work from artists who have been associated with Patchings in the past. A warm welcome to some old friends and a promise of some exquisite work.



SELF INDULGENCE

JANUARY 2 – 31 2009

CREW YARD GALLERY

Christmas is over and the spirits may be flagging. Now is the time of new resolve and perhaps a resolution to indulge yourself a little more. A reward maybe, to be enjoyed in the quiet moments of the forthcoming year "Happy New Year to You All".

EVENTS

In addition to our programme of exhibitions this year, we are pleased to announce a number of events. As you will see one or two have been arranged with our 20th anniversary in mind. Details of these are in date order. For those occasions requiring tickets, these can be purchased from Patchings.

TEDDY BEAR FAIR

EASTER MONDAY MARCH 24 and BANK HOLIDAY MONDAY

AUGUST 25

PAVILION & LOG CABIN

10.00am to 4.00pm

Each Easter and August Bank Holiday Monday the Pavilion becomes the temporary home for hundreds of teddies. With a range of exhibitors, these events prove popular for the young and the old, the collector and the owner. Why not bring your teddy along to make friends with the others. Admission Free. Refreshments available.



ART SCHOOL EXHIBITION

SATURDAY 3 MAY to MONDAY 5 MAY

PAVILION 10.00am to 4.00pm.

The many accomplished students who form part of the Patchings Art School bring together a selection of their work produced during the last 12 months. An opportunity to see a wide range of work which is certain to make a colourful and exciting show. It might even inspire.

STUDIO ARTISTS – A DAY OF CELEBRATION

BANK HOLIDAY MONDAY MAY 5

STUDIOS

A busy day at Patchings and a chance for visitors to see both the exhibition in the Pavilion and visit our team of studio artists. Each year this day is set aside for our talented group to welcome new and existing customers and visitors.



PATCHINGS ART CLUB

FESTIVAL EXHIBITION

THURSDAY JUNE 5 – SUNDAY JULY 13

PAVILION

Opening with the Festival an exhibition of current work by Art Club Members showing in the Pavilion.